

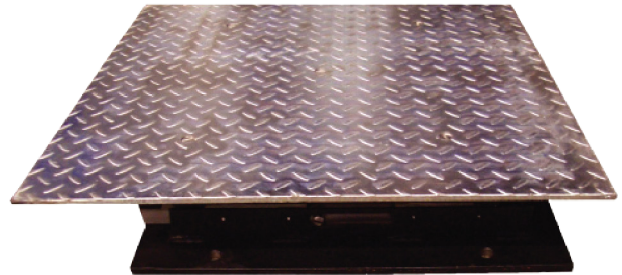
DESCRIPTION

Sherpa In-Ground Play Detector

Sherpa, a leader in vehicle testing solutions for over 30 years, offers cutting-edge technology designed to meet the evolving needs of heavy vehicles. Manufactured in Germany, the Sherpa Play Detector is renowned for its precision and durability.

The robust, hot-dip galvanized test plates provide an expansive contact area, ensuring reliable results even under the toughest conditions. Hydraulically powered, these plates move laterally and lengthwise to detect worn-out or loose axle and steering components with pinpoint accuracy.

Designed for longevity and consistent performance, the Sherpa Play Detector 'SP20100' is an essential tool for thorough heavy vehicle inspections.

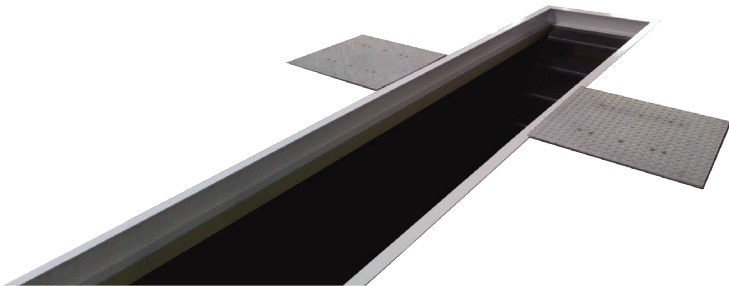


Play Detector

- Play detector hydraulic for working pit
- Two floor assemblies with hydraulic cylinder for lateral and lengthwise movement
- Hot-dip galvanised test plates on lowmaintenance and low-wearing plastic sliding bearings or hard chrome steel shafts

Hydraulic Unit

- High-performance hydraulic unit with tank and attached electrical / control box with main switch, switching and control elements
- Operating unit with rocker switch and 12m cable



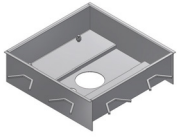
Tech Specs	SP20100
Axle load max.	20 t
Transverse and longitudinal plate movement	100 mm (± 50 mm)
Test plate dimensions (L x W x H)	750 x 900 x 12 mm
Device dimensions without cover plate (L x W x H)	600 x 600 x 160 mm
E-motor output for hydraulic unit	4 kW
Hydraulic pressure	200 bar
Thrust per cylinder	32 kN
Lifting speed	ca. 6 cm/s
Electrical / control box, housing dimensions (L x W x H)	370 x 185 x 130 mm
HLP 46 hydraulic oil fill level	20 l
Supply voltage	415V 3PH 50Hz

— • • • • • —
PRODUCT OF GERMANY 

 **SHERPA**
YOUR SAFETY IS OUR DRIVE

Specifications/images subject to change without prior notice. Images are for illustration purposes only. To validate warranty, proof of a valid maintenance contract will be required. Product of Germany. 

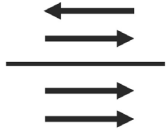
**ADDITIONAL
FEATURES**



Foundation trays (2 pieces) as permanent casing, wet primed or hot-dip galvanised



LED hand lamp incl. cable remote control or codable radio remote control



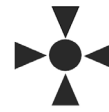
Double-sided concurrent transverse and longitudinal movement for commercial vehicles

L / R

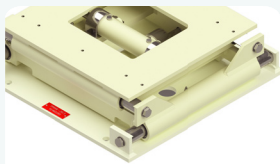
Single wheel movement



Automatic plate movement, with adjustable number of movements and changeover speed



Automatic mid-position, via programcontrolled signal sensor



Floor assembly with hard chrome steel shafts

— • • • • • —
PRODUCT OF GERMANY 
— • • • • • —

 **SHERPA**
YOUR SAFETY IS OUR DRIVE

Specifications/images subject to change without prior notice. Images are for illustration purposes only. To validate warranty, proof of a valid maintenance contract will be required. Product of Germany. 