



# KAR350

## 35T Truck Knuckle Lift

### DESCRIPTION

#### Heavy duty truck knuckle lift

The KAR 250 is an electro-hydraulic pantograph lift with vertical raising, free of interference on the floor and ideal for heavy vehicle maintenance and lifting.

With a lift capacity of 25t, this massive heavy duty knuckle lift is perfectly suited for the bigger side of lifting. Ideal for lifting lorries, trucks, buses and any other large capacity vehicle, this model is available in surface or flush mount.

KAR250 is the ideal lift for heavy duty truck and bus maintenance and service workshops.

#### Heavy duty 25t electro-hydraulic pantograph truck lifts

Designed with a strong and compact frame, the KAR250 vehicle lift guarantees perfect stability on the runways, providing functionality, safety and consistent reliability.

Platform lengths include as standard 9,000 mm, 10,000 mm and 11,000 mm options; however you can still customise this to suit your needs.



#### KAR series heavy duty lift features



##### Lifting strength

OMER paid particular emphasis to the lift's overall strength, with solutions specially developed for this model. These include tubular structure runways and smooth metal sheet to bear loads under the worst conditions [such as asymmetric loads].



##### Vertical leg design

Thanks to the original and innovative leg design, the knuckle lift has vertical movement. Another advantage of this solution is the discharge of the vertical forces on the foundation. The knuckle lift also features an electronic balancing system with automatic levelling.



##### Piston innovation

Housing of the piston in the upper part of the leg protects it against both dirt falling from vehicles, and damage from tools accidentally dropped by the technician.



Specifications/Images subject to change without prior notice. Images are for illustration purposes only. To validate warranty, proof of a valid maintenance contract will be required. Product of Italy



p.1300 577 541

e. sales@levanta.com.au

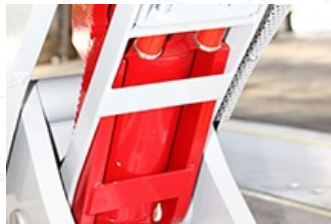
www.levanta.com.au

### DESCRIPTION



#### No electronics

The master slave synchronism with "torsion bar" brought inside the control box offers easy maintenance and minimal downtime. Since no electronics are involved, the system remains mechanical/hydraulic.



#### Torque & deformation resistant platforms

No mechanical stress on the structure increases the lifespan of the unit. The box structure has more resistance to flexions & torque, even with higher loads.



#### Open space working environment

Your technicians will experience more comfort and improved access to the vehicle maintenance workspace.



#### More stability – no sliding points

The master slave synchronism with "torsion bar" brought inside the control box offers easy maintenance and minimal downtime. Since no electronics are involved, the system remains mechanical/hydraulic.

#### Safety features of the KAR250 knuckle lift system



Control console features dead man's buttons and is designed to be simple and intuitive.



Mechanical safety locks secure the lift while it's working. Piston air is used for the opening of mechanical safety locks.



Burst valve inserted at the back of each lifting piston with hydraulic hose for high pressures, and 5 different pressure relief valves.



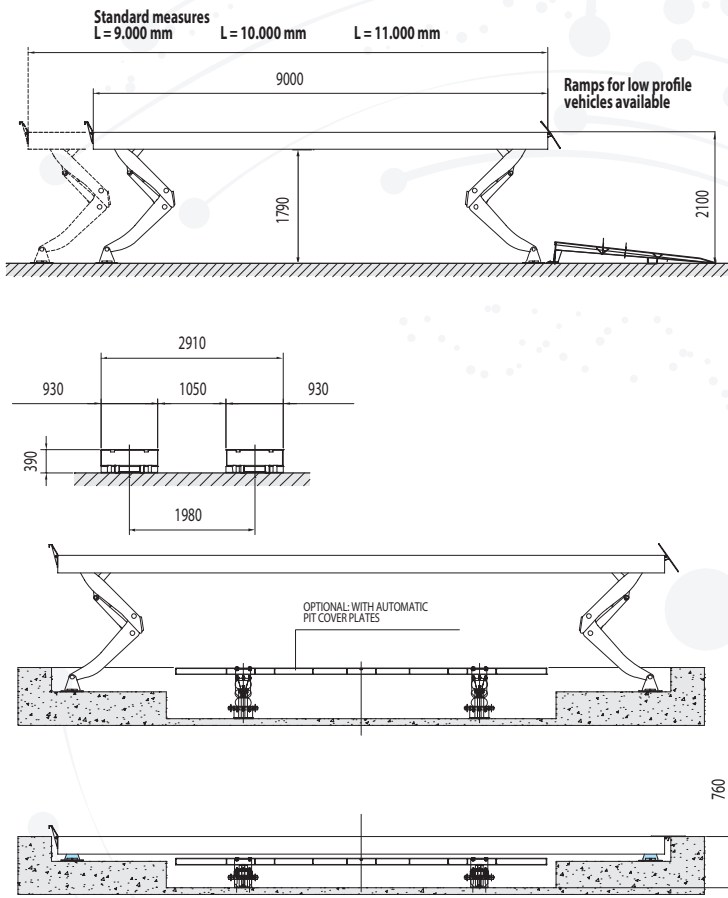
Specifications/images subject to change without prior notice. Images are for illustration purposes only. To validate warranty, proof of a valid maintenance contract will be required. Product of Italy 



# KAR350

## 35T Truck Knuckle Lift

### DESCRIPTION



Tech Specs	KAR350	KAR350 Twin
Lifting Capacity	35 t	35 t
Lifting Height	1,790 mm	1,790 mm
Runway Length (options)	9,000 mm / 10,000 mm / 11,000 mm	9,000 mm / 10,000 mm / 11,000 mm x 2
Collapsed Height	390 mm	390 mm
Air Operated	4 - 8 Bar	4 - 8 Bar
Oil Pressure	220 Bar	220 Bar
Oil Capacity	50 l	50 l
Gross Weight	8,000 kg	8,000 kg
Lifting Time	80 seconds	80 seconds
Motor	415V 3PH 7.5KW	415V 3PH 7.5KW

PRODUCT OF ITALY



Specifications/Images subject to change without prior notice. Images are for illustration purposes only. To validate warranty, proof of a valid maintenance contract will be required. Product of Italy



p.1300 577 541

e. sales@levanta.com.au

www.levanta.com.au