

DESCRIPTION

Heavy-Duty Knuckle Lift

With a lift capacity of 20t this massive heavy duty knuckle lift is perfectly suited for the bigger side of lifting. Ideal for Lorries, trucks, buses and any other large capacity vehicle, this model is available in surface or flush mount. The KAR200 is an electro-hydraulic pantograph lift with vertical raising, free of interference on the floor and ideal for heavy vehicle maintenance and lifting.

Key Product Features:

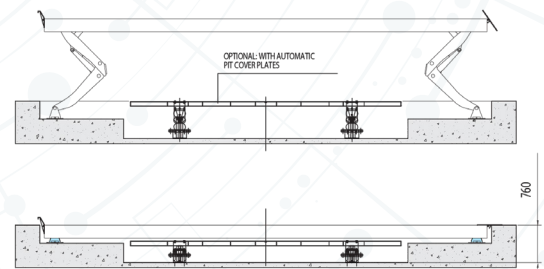
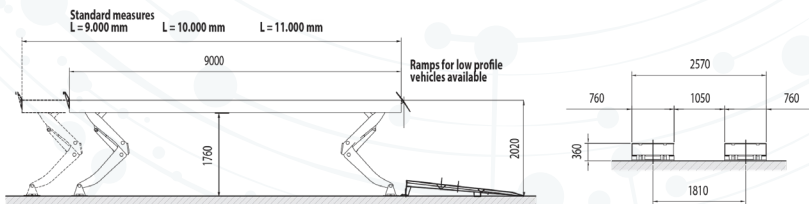
- Completely clear work area for the operator due to the leg design and structure of the lift
- No mechanical connection between the platforms
- The runway has been designed to accommodate the use of rolling jacking beams
- Embossed anti-slip finish on all platform surfaces maximum safety for all lifting / lowering operations
- Available for surface mount or flush mount Installation
- Mechanical lock on each lifting cylinder
- Burst valve on each lifting cylinder
- Runway leveling controlled by photo sensors
- Acoustic warning and by pass key when lift reaches 500mm from lowered position
- Dead man control

Extra Options Available:

- Jacking beams
- Lighting kit
- Hot dip galvanisation
- Automatic pit cover plate



Tech Specs	KAR200
Lift Capacity	20 t
Lifting Height	1,760 mm
Runway Length	9,000 mm / 10,000 mm/ 11,000 mm
Collapsed Height	360 mm
Air Operated	4 - 8 Bar
Oil Pressure	220 Bar
Oil Capacity	50 L
Gross Weight	7,000 Kg
Lifting Time	70 Seconds
Power	415V 3PH 7.5KW



Specifications/Images subject to change without prior notice. Images are for illustration purposes only. To validate warranty, proof of a valid maintenance contract will be required. Product of Italy